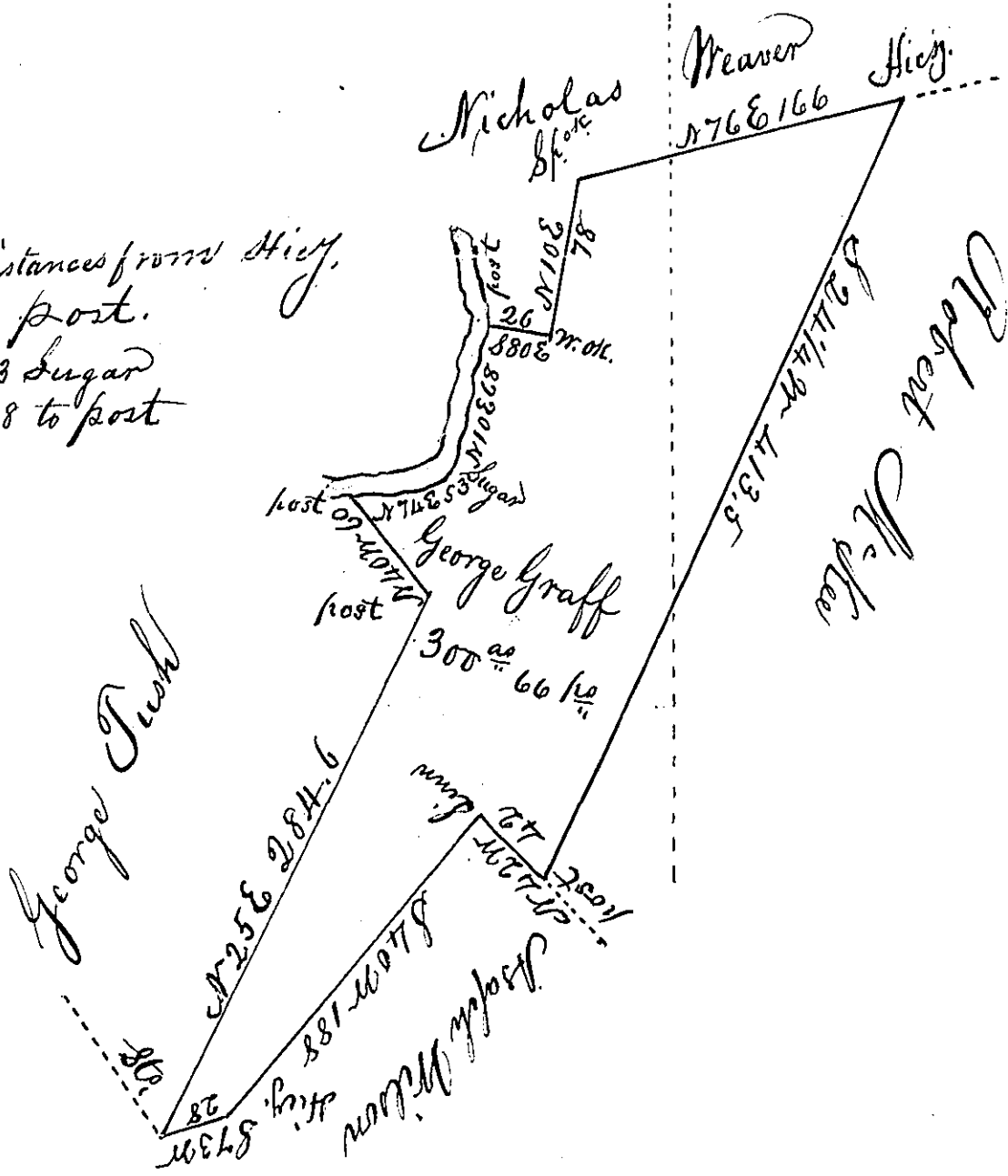


Courses & Distances from Hwy.
down to post.
N 74 E 53 Sugar
N 10 E 68 to post



Draught of a tract of land situated in Pike Township, Clearfield County on the West Branch of Susquehanna River containing three hundred acres and sixty six perches and the usual allowance of six per cent for roads &c Surveyed the 17th day of October 1828 in pursuance of a warrant dated the 7th day of Sept^r 1773 granted to George Graff for 300 acres.

To Gabriel Heister Esqr
Surveyor General

David Ferguson,

Note, The above survey interferes wholly with Robert McKee and James Mays

IN TESTIMONY that the above is a copy of the original remaining on file in the Department of Internal Affairs of Pennsylvania, made conformably to an Act of Assembly approved the 16th day of February, 1833, I have hereunto set my Hand and caused the Seal of said Department to be affixed at Harrisburg, this

Nineteenth day of March 1834.

J. Simpson Africa,
Secretary of Internal Affairs